

NOTICE INVITING TENDER
ARMY PUBLIC SCHOOL JORHAT

1. Sealed Quotations along with documents in support are invited from Firms/Vendors for the supply and Job work mentioned below:-

(i) Construction of school Library

(a) Qty – 01

(b) Total carpet area of the room – 22 ft(length) x 20 ft(breadth)
- 440 sqft

(ii) Wall mounted shelves

(a) Qty – 01

(b) Specification:-

Height	Width	Material
7ft	20ft	Veneer Plywood

2. For details please visit the office of the undersigned during office hours from 25 Feb 2021 to 10 Mar 2021 or contact 0376-2333069.

3. Terms and conditions

(a) Tender should reach Army Public School ,Jorhat on or before 10 Mar 2021.

(b) Tender will be put in tender box placed at Army Public School, before 1100 hrs on 10 Mar 2021

(c) Tender will be opened by a Board of Officers in front of vendors at 1100 hrs on 11 Mar 2021

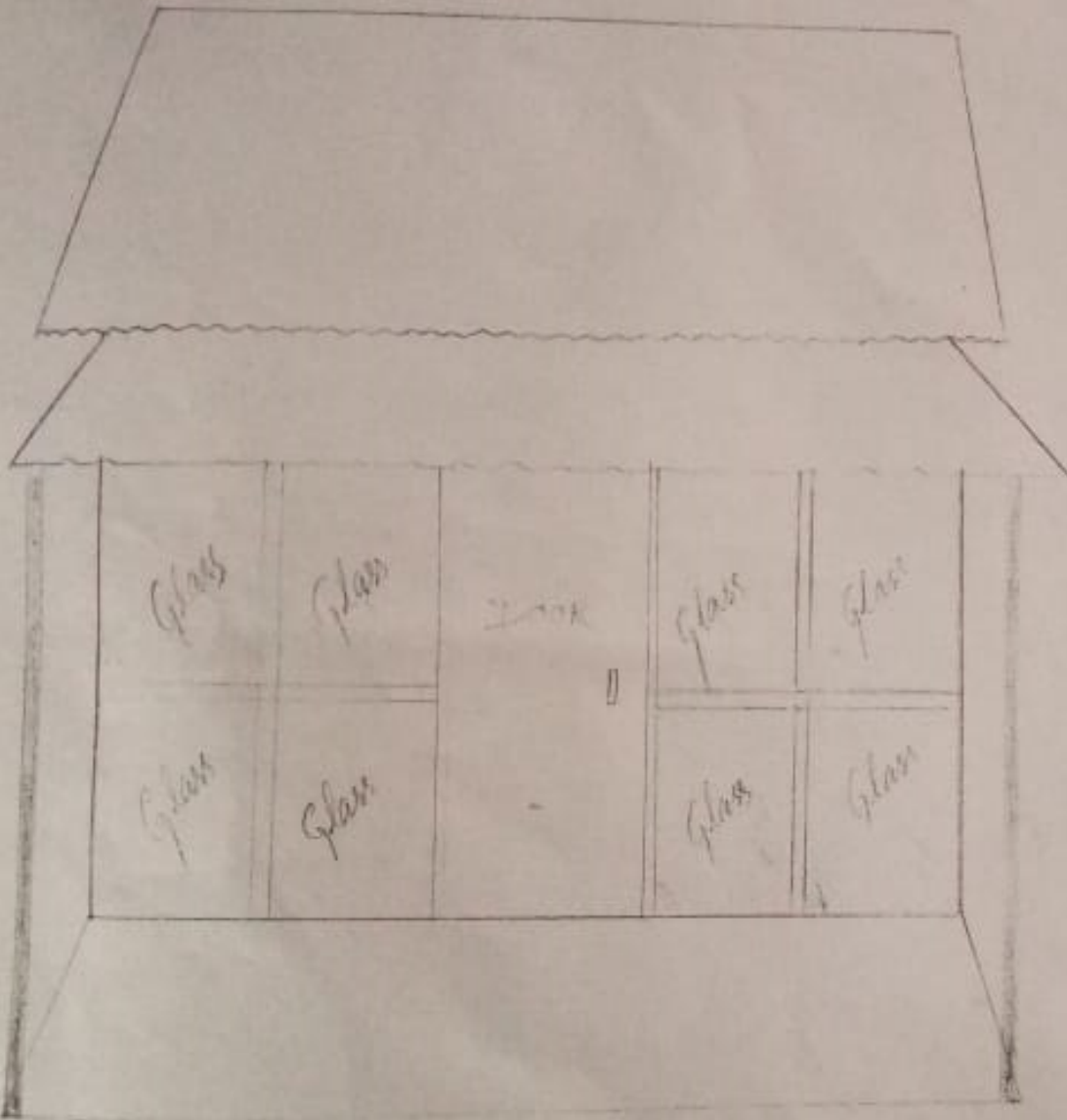
(d) GST No, PAN No and TIN No must be mentioned on the tender.

(e) The lowest rate quoted Firm will be accepted. No entertainment will be accepted at the time of opening of quotation.

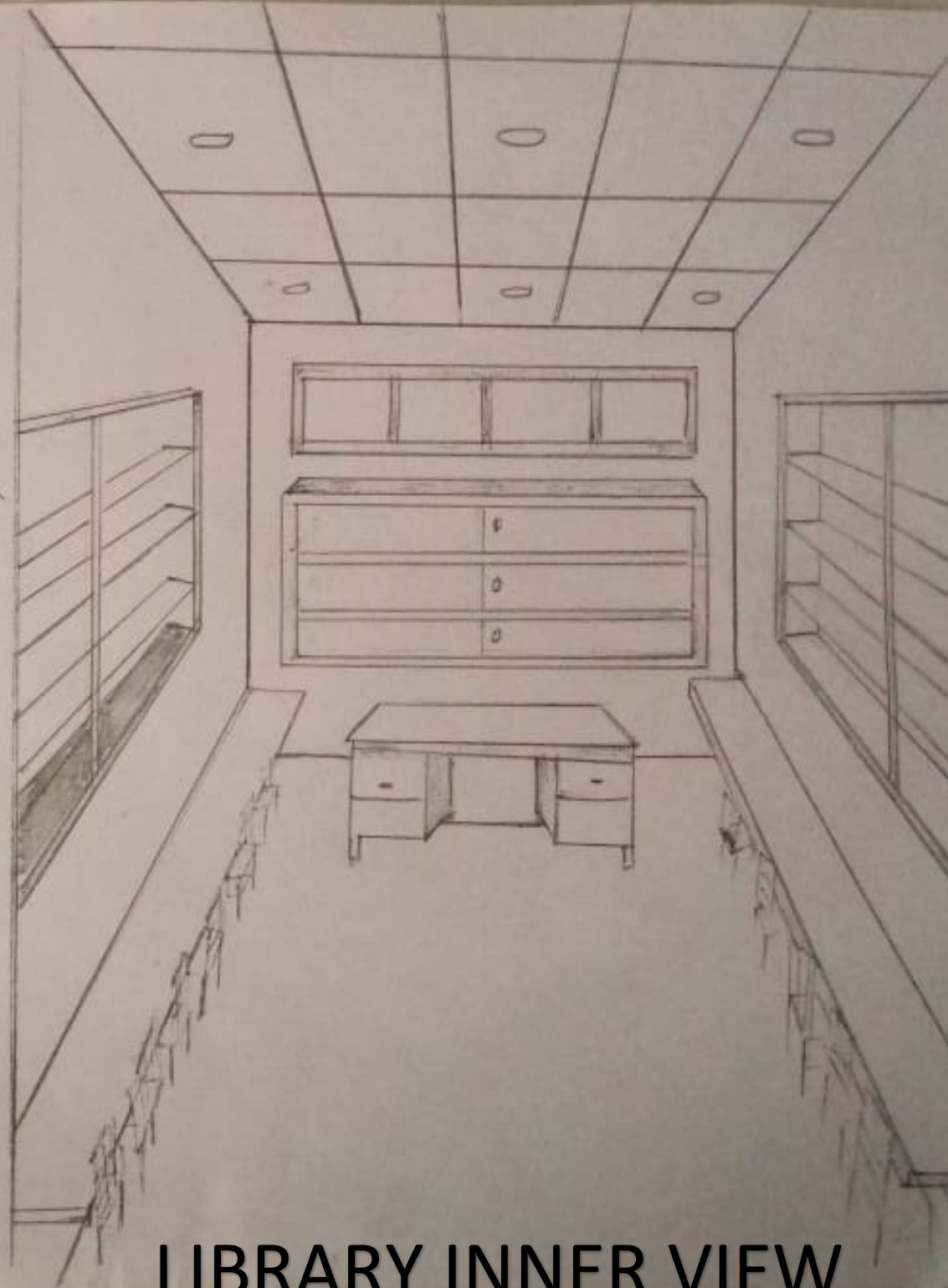
Sd/-

Principal

Army Public School, Jorhat

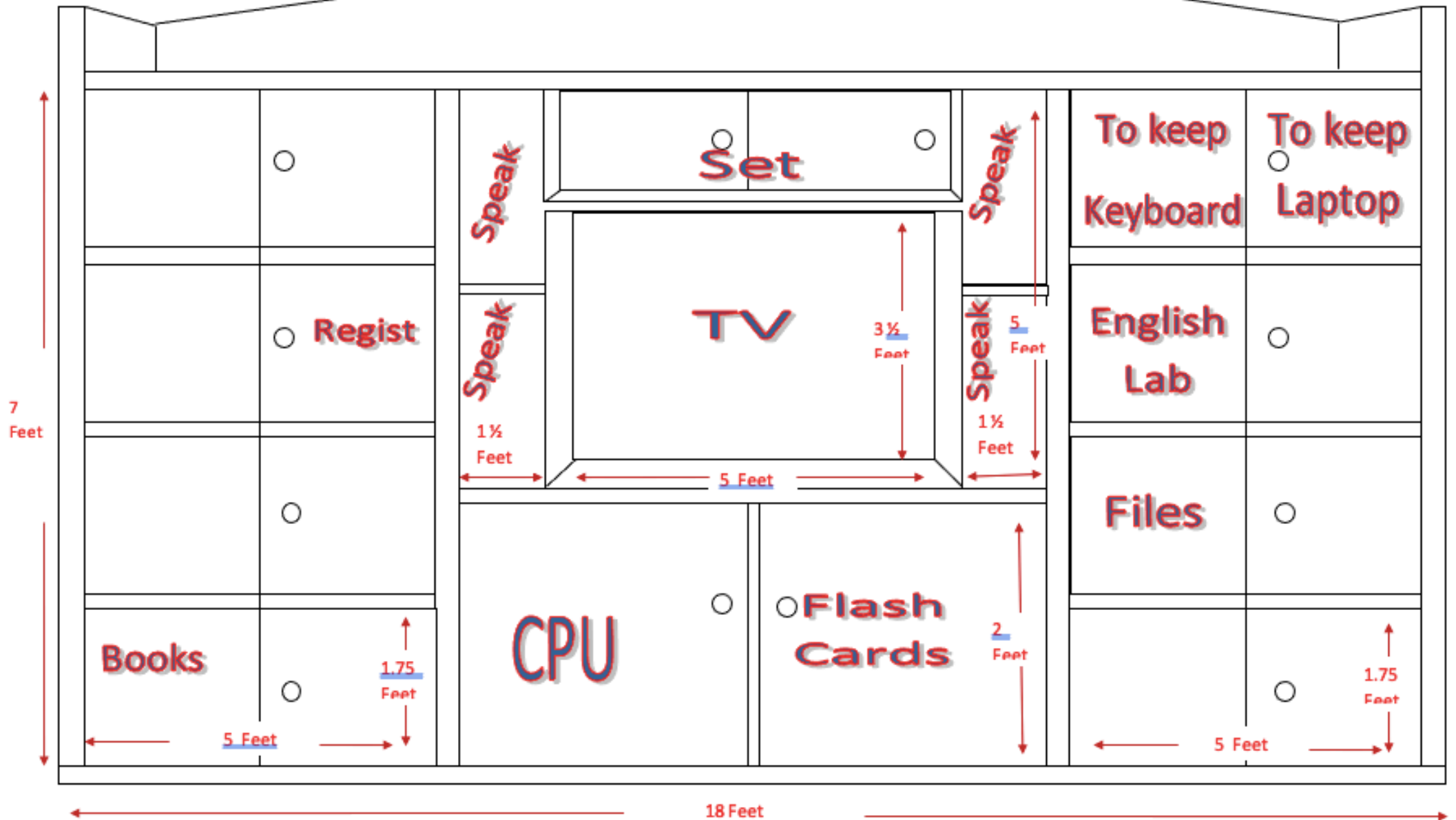


LIBRARY OUTER VIEW



LIBRARY INNER VIEW

WALL MOUNTED SHELF



SPECIFICATION OF SCHOOL LIBRARY IN JUNIOR WING

A new Library is to be constructed in the available space between class II(B) & III(A) at Junior wing having length 22 feet and breadth 20 feet along with a verandah of length 10 feet and breadth of 20 feet. Height of the plinth 2 feet above ground.

Total carpet area of the building 440 sq ft.

- * Nos of doors - 1
- * Nos of windows - Nil
- * Nos of ventilations - One (with divided into four parts)
- * Roof sheet should be extended by 2 feet of the backside.
- * Electrical wiring and fixtures are to be installed.
- * Floors of Library and verandah will be covered using tiles.
- * The whole building will be painted according to the technical specifications.

Technical Specifications :

1. Lean concrete below RCC column and Plinth beam (PB) Plain cement concrete mix Ration 1:3:6
2. RCC works in column footings, column, plinth beam, root beam, lintel bands, design mix of nominal mix in ratio 1:1.5:3
3. Anti – Termite treatment : ATT to be carried out as under.
 - (i) To earth filling in contact with portion of RCC structure from top of Earth filling.
 - (ii) Under floor filling @ 5.01 / sqm

- (iii) At wall floor junction @ 7.51 / sqm upto 300 mm from top of filling.
- (iv) Along external edge of wall / bldg @ 7.51 / sqm upto 300 mm deep from top of natural / filled up GL.
- (v) Below plinth protection @ 5.01 / sq m

Note : Anti termite treatment to be carried out with chloropyriphos 20 EC malge : Dursban application should possess authentication certificate for application from pest control India.

4. Brickworks : Brickwork be done with AAC bricks for walls (Compressive strength not less than 4 N/mm²) to be done with adhesive cement bonding and 1st class red brick for plinth (Compressive strength not less than 4 N / mm²) to be done with cement sand mortar in the ration 1:4
Thickness of the plinth : 250 mm
Thickness of wall including plaster : 125 mm
5. Damp proof course at floor level : DPC with 40 mm thick PCC 1:2:4 with 12:50 mm graded coarse aggregates and top finished surface to painted with a coat of bitumen. Compound (SIKA / DR. FIXIT) @ 1.51 / 50 kg bag of cement. dpc is to be provided at floor level along all brick walls.
6. Internal plaster : In cement sand mortar in the ration 1:6 thickness should be 15 mm, finished fair and even.
7. External plaster : 20 mm thick external plaster in cement san mortar 1:4 mixed with water proofing compound @ 1:50 ltr / 50 kg bag of cement.
8. Roofing : Roofing to be done with .60 mm thick coloured roof sheet, make : with 150 gms per aqm aluminium – zinc coating, sheets to be fixed to MS truss / purlins with self tapping screws.
9. Truss / purlins : MS framed tubular truss / purlins painted with 2 coats of synthetic enamel paint over a coat of red oxide zinc chrome primer.
10. Aluminium works : Make : Bhagwati Sai / Jindal / Halco (anodized powder coated for coloured).
11. Ventilation window should be sliding type with glass and Aluminium frame height 3 feet, breadth 16 feet.
12. Paneled door shutter / frame : 2nd class hardwood paneled door shutter 40 mm thick fixed to pressed steel door frame. Door frame to be filled with PCC 1:3:6 using 12.5 mm gradedagg. Internal surface of pressed steel door frame to be painted with black bituminous paint. Dimension of Door : 1050 mm x 1950 mm, Thickness : 40.

Handles : 8 inch both side

Door stopper : both sides

Lock : concealed lock.

13. Flooring : With 600 mm x 600 mm x 10 mm vitrified tiles over 15 mm thick screed bed of cement sand mortar in the ration 1:3:6 over 150 mm thick PCC sub base in the ration 1:3:6 over 150 mm thick hardcore, compacted well, over rammed earth.
14. Skirting : With 600 mm wide & 100 mm high vitrified tile cuttings fixed to wall surface with cement sand mortar in ratio 1:4 and neat cement sturry.
15. Internal Painting : Wall (Internal surface) to be painted with 02 coats of acrylic emulsion paint (make : Asian paints)
16. External Painting : Wall (External surface) to be painted with 02 coats of acrylic exterior weather proof paint (make : Asian paints)
17. Plinth Protection : PCC plinth protection 1000 mm wide with 150 mm thick PCC in cement 1:3:6 over 100 mm thick hardcore, keeping joints at every 3 m top surface to e finished with paving tiles 300 mm x 300 mm.
18. For electrical works –
 - 16 sqmm 4 core xlpe cable for connection to TPN DB to Fiddler Pillar / pole. 4 TPN DB for electric supply distribution.
 - Point wiring /submain – surface point wiring of FRLSH
 - Electrical wire 1.5 sqmm – ISI brand
 - Electrical wire 2.5 sqmm – ISI brand
 - MCB – 6A, 16A
 - Switches / socket – Modular type switches / socket
 - Earthing – Pipe earthing as safety measures to leavage of cement.
 - LED lights – bulb B22 mount / LED tube light= 8 nos
 - Air conditioning – provision for 2 x 1.5 T capacity split inverter AC with 5 star rating for AC.
 - Ceiling fan 1400 mm sweep ceiling= fan.6 nos.
- 19 * 2 wall mounted iron cabinet length 15 feet and 6 feet height with 4

Shelves inside.

* 2 concrete slabs length 22 feet fixed with wall, breadth 2 ½ feet.

* 1 wall mounted iron cabinet of length 16 feet, breadth 6 feet.

20. Front side cover with thick glass with aluminum frame breadth 20 feet and height 7 feet.

21. Front side cemented Wall breadth 20 feet and height 3 feet.

22. The false Ceiling is to be made by lower weight material like gypsum and stainless steel structure.

False ceiling material specification:

Gypsum board dimension : 4 feet x 6 feet

Thickness : 12 mm.

SS sections are to be used with the board.

23. A pathway is to be constructed from the road to entrance of the library using block and concrete.

Specification of the paver block:

Type: Zigzag paver block.

Thickness: 60mm

Area Coverage : 19 x 14 feet.